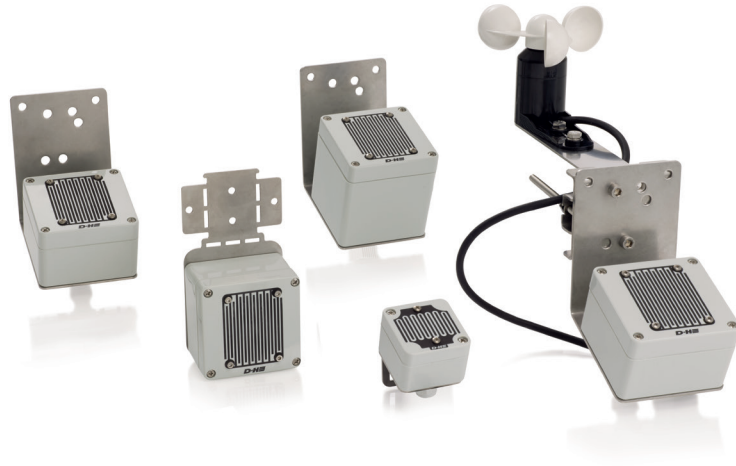


Weather sensors



Performance features

- » Suitable for connecting to all D+H SHEV and ventilation control panels
- » Also available with radio signal (REM 801-RC)
- » Flexible installation
- » Integrated wind signal emitter, optional

Type	Art. No.	Description	Technical data											
VRS 10	30.300.90	Rain detector <ul style="list-style-type: none"> » For rain monitoring of ventilation flaps in conjunction with 24 V DC SHEV and ventilation controllers » Rain signal is stored for approx. 2 minutes (rain hold time) » Rain sensor in compact design, 24 V DC » Heated sensor area 	<table border="1"> <tr> <td>Input voltage</td> <td>24 V DC</td> </tr> <tr> <td>Housing</td> <td>Polycarbonate</td> </tr> <tr> <td>Colour</td> <td>Grey (~ RAL 7035)</td> </tr> <tr> <td>W x H x (D) in mm</td> <td>50 x 70 x 66</td> </tr> <tr> <td>Weight</td> <td>0.40 kg</td> </tr> </table>	Input voltage	24 V DC	Housing	Polycarbonate	Colour	Grey (~ RAL 7035)	W x H x (D) in mm	50 x 70 x 66	Weight	0.40 kg	
Input voltage	24 V DC													
Housing	Polycarbonate													
Colour	Grey (~ RAL 7035)													
W x H x (D) in mm	50 x 70 x 66													
Weight	0.40 kg													



Type	Art. No.	Description	Technical data											
REM 42	30.301.00	Rain detector <ul style="list-style-type: none"> » For rain monitoring of ventilation flaps in conjunction with 24 V DC drives and D+H control panels » Rain signal is stored for approx. 2 minutes (rain hold time) » Heated sensor area 	<table border="1"> <tr> <td>Input voltage</td> <td>24 V DC</td> </tr> <tr> <td>Housing</td> <td>Polycarbonate</td> </tr> <tr> <td>Colour</td> <td>Grey (~ RAL 7035)</td> </tr> <tr> <td>W x H x (D) in mm</td> <td>85 x 150 x 110</td> </tr> <tr> <td>Weight</td> <td>0.50 kg</td> </tr> </table>	Input voltage	24 V DC	Housing	Polycarbonate	Colour	Grey (~ RAL 7035)	W x H x (D) in mm	85 x 150 x 110	Weight	0.50 kg	
Input voltage	24 V DC													
Housing	Polycarbonate													
Colour	Grey (~ RAL 7035)													
W x H x (D) in mm	85 x 150 x 110													
Weight	0.50 kg													



Type	Art. No.	Description	Technical data											
REM 801-RC	30.302.20	Wireless rain detector <ul style="list-style-type: none"> » Presence monitoring in wireless operation » Signal output via radio or switching contact » Integrated test function for controlling the reception quality » Rain signal is stored for approx. 5 minutes (rain hold time) » Heated sensor area (not possible in battery operation) 	<table border="1"> <tr> <td>Input voltage</td> <td>24 V DC</td> </tr> <tr> <td>Housing</td> <td>Polycarbonate</td> </tr> <tr> <td>Colour</td> <td>Grey (~ RAL 7035)</td> </tr> <tr> <td>W x H x (D) in mm</td> <td>80 x 82 x 55</td> </tr> <tr> <td>Weight</td> <td>0.50 kg</td> </tr> </table>	Input voltage	24 V DC	Housing	Polycarbonate	Colour	Grey (~ RAL 7035)	W x H x (D) in mm	80 x 82 x 55	Weight	0.50 kg	
Input voltage	24 V DC													
Housing	Polycarbonate													
Colour	Grey (~ RAL 7035)													
W x H x (D) in mm	80 x 82 x 55													
Weight	0.50 kg													



Type	Art. No.	Description	Technical data
------	----------	-------------	----------------

REM 230 30.300.20



Rain detector

- » For rain monitoring of ventilation flaps in conjunction with 230 V AC drives
- » Rain signal is stored for approx. 2 minutes (rain hold time)
- » Switching contact: Change over contact 230 V AC, max. 5 A
- » Heated sensor area

Input voltage	230 V AC
Housing	Polycarbonate
Colour	Grey (~ RAL 7035)
W x H x (D) in mm	85 x 150 x 120
Weight	1.30 kg

Type	Art. No.	Description	Technical data
------	----------	-------------	----------------

WRG 82 30.301.10



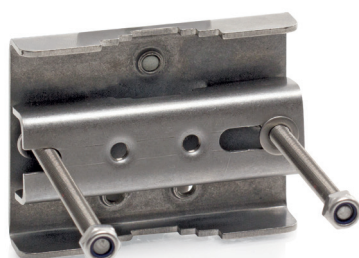
Wind/rain sensor

- » Rain signal is stored for approx. 2 minutes (rain hold time)
- » Wind switching threshold via DIP switch configurable to 4 or 6 Bft.
- » Signal retention time of the wind signal for approx. 10 minutes
- » In combination with WE 516, WME 43 or WRZ 8000, it is possible to continuously adjust the wind switching threshold between 2-8 Bft.; the signal retention time can be selected between 1-15 min.
- » Heated sensor area

Input voltage	24 V DC
Housing	Polycarbonate
W x H x (D) in mm	85 x 100 x 400
Weight	2.00 kg

Type	Art. No.	Description	Technical data
------	----------	-------------	----------------

AMB 70.600.05



Antenna mast mounting

- » Suitable for installation to an antenna mast for diameters of 42 to 60 mm

Colour	Silver
Weight	0.35 kg

